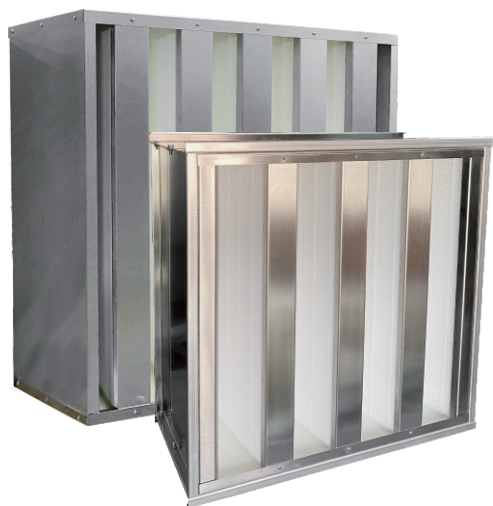


## V-bank High Efficiency Filter



### PRODUCT FEATURES

- ▶ Large air flow and low resistance.
- ▶ Large load, high efficiency, suitable for constant airflow and variable airflow systems.
- ▶ Extended filter area.

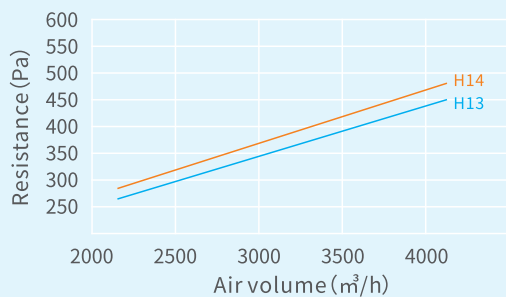
### USING

- ▶ Commercial and industrial ventilation systems, intermediate or end filtration of air conditioning systems.

## TECHNICAL DATA

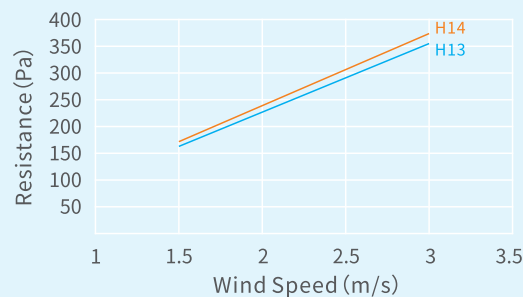
### Air volume-resistance curve

610 x 610 x 292/4V



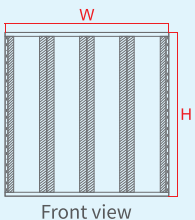
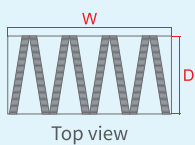
### Wind Speed-Resistance Curve

610 x 610 x 292/4V

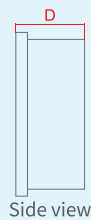
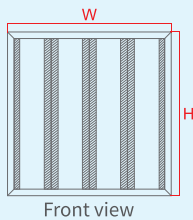
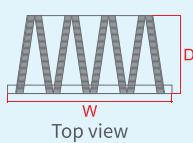


### Three Views of Filter

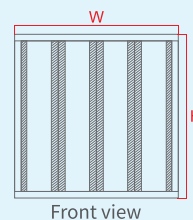
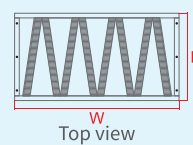
Box type



Single flange



Outturned structure



FILTRATION GRADE **M6** **F7** **F8** **F9** **H10** **H11** **H12** **H13** **H14**

<b>Filter Media</b>	Ultrafine glass fiber filter
<b>Frame Material</b>	Aluminum / Galvanized / Stainless Steel
<b>Sealants</b>	Pu two-component polyurethane adhesive
<b>Sealing Type</b>	EVA / EPDM / PU
<b>Separators</b>	Hot melt adhesive
<b>Optional Thickness (mm)</b>	220 / 250 / 292 / 305
<b>Maximum Temperature</b>	70°C
<b>Maximum Humidity</b>	100%

Filtration Grade	Dimensions (mm) W x H x D	Filter Area (m <sup>2</sup> )	Rated Air Flow (m <sup>3</sup> /h)	Testing Wind Velocity (m/s)	Initial Pressure Drop (Pa)	Final Pressure Drop (Pa)
F9	592 x 287 x 292/4V	7.40	1600	2.5	125	250
	592 x 592 x 292/4V	14.78	3200			
	610 x 305 x 292/4V	8.25	1520			
	610 x 305 x 292/5V	10.32	1680			
	610 x 610 x 292/4V	16.50	3250			
	610 x 610 x 292/5V	20.62	3400			
H10	592 x 287 x 292/4V	7.64	1600	2.5	150	450
	592 x 592 x 292/4V	18.13	3200			
	610 x 305 x 292/4V	9.89	1520			
	610 x 305 x 292/5V	12.28	1680			
	610 x 610 x 292/4V	19.12	3250			
	610 x 610 x 292/5V	24.26	3400			
H13	592 x 287 x 292/4V	7.64	1600	2.5	300	500
	592 x 592 x 292/4V	18.13	3200			
	610 x 305 x 292/4V	9.89	1520			
	610 x 305 x 292/5V	12.28	1650			
	610 x 610 x 292/4V	19.12	3250			
	610 x 610 x 292/5V	24.26	3400			
H14	592 x 287 x 292/4V	7.64	1600	2.5	320	500
	592 x 592 x 292/4V	18.13	3200			
	610 x 305 x 292/4V	9.89	1520			
	610 x 305 x 292/5V	12.28	1650			
	610 x 610 x 292/4V	19.12	3200			
	610 x 610 x 292/5V	24.26	3400			